

<b>COMPANY NAME</b> _____	<b>PHONE</b> _____
<b>CONTACT</b> _____	<b>ACCOUNT NO.</b> _____
<b>JOB NAME</b> _____	<b>FAX</b> _____
	<b>EMAIL</b> _____

**QUOTE**     **ORDER P.O. #** \_\_\_\_\_    **DATE** \_\_\_\_\_

**DOOR OPENING SIZE**

- Standard 36" (914) W x 84" (2134) H
- Specify  
Width: \_\_\_\_\_  
Height: \_\_\_\_\_

**WALL OPENING SIZE**

- Standard 39" (991) W x 85-1/2" (2172) H
- Specify  
Wall Opening Width = Door Opening Width + 3"(76): \_\_\_\_\_  
Wall Opening Height = Door Opening Height + 1-1/2"(38): \_\_\_\_\_

**VISIONLITE**

- No
- Yes  
Use Page 3 to specify VisionLite size, position and glazing

**HARDWARE**

- Surface mounted door closer CRL P/N PR90A
- Continuous aluminum geared hinge, anodized finish
- Lever Handles with Cylinder Lock, 2-3/4" (70) Backset, ASA strike\* US26D finish
- Custom  
Specify Manufacturer, product number and preparation template required.  
\_\_\_\_\_

NOTE: Preparation for specified hardware by CRL. Hardware not included.  
\* NOTE: Unless otherwise specified, strike is located 40-5/16"(1024) A.F.F.

**APPLICATION**

- Exterior to Interior
- Interior to Interior

**UL752 LEVEL**

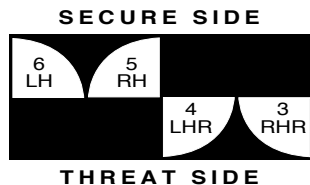
- BR Door Level 1
- BR Door Level 3
- Specify  
\_\_\_\_\_

**FRAME TYPE (REFER TO ATTACHED SHEETS)**

- Detail A  
Accommodates exterior block or concrete wall thickness of 6" to 12" (152 to 304)
- Detail B  
Accommodates interior wall thickness of 5-3/8" (137) stud and drywall constructions
- Custom Frame Detail C  
State wall condition and overall size. Use Detail C to sketch if required.  
\_\_\_\_\_

**DOOR HINGE / SWING**

- Specify Door Hinge / Swing:
- 3 RHR     4 LHR     5 RH     6 LH



NOTE: Unless specified otherwise, standard keyed lock is on threat side.

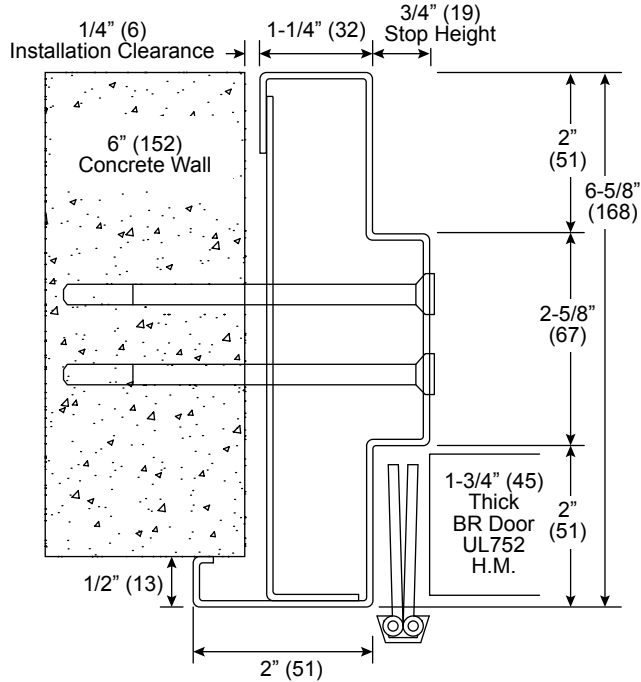
**THRESHOLD / FLOOR CONDITION**

- Standard  
5/8" (16) undercut will accommodate a 1/2" (13) threshold at exterior installations.
- Specify Floor Condition before/after door installation or state required undercut:  
\_\_\_\_\_

**APPROVED BY** \_\_\_\_\_    **DATE** \_\_\_\_\_

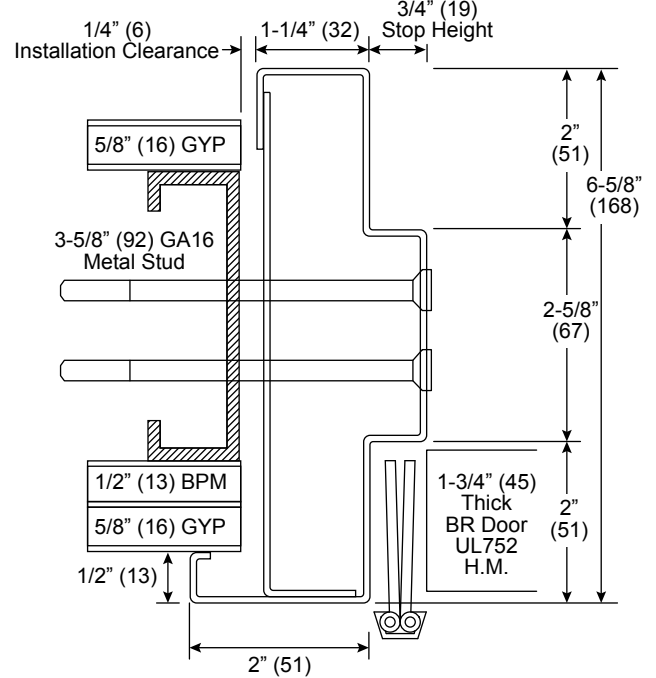
Detail A

Accommodates exterior block or concrete wall thickness of 6" to 12" (152 to 304)



Detail B

Accommodates interior wall thickness of 5-3/8" (137) stud and drywall constructions

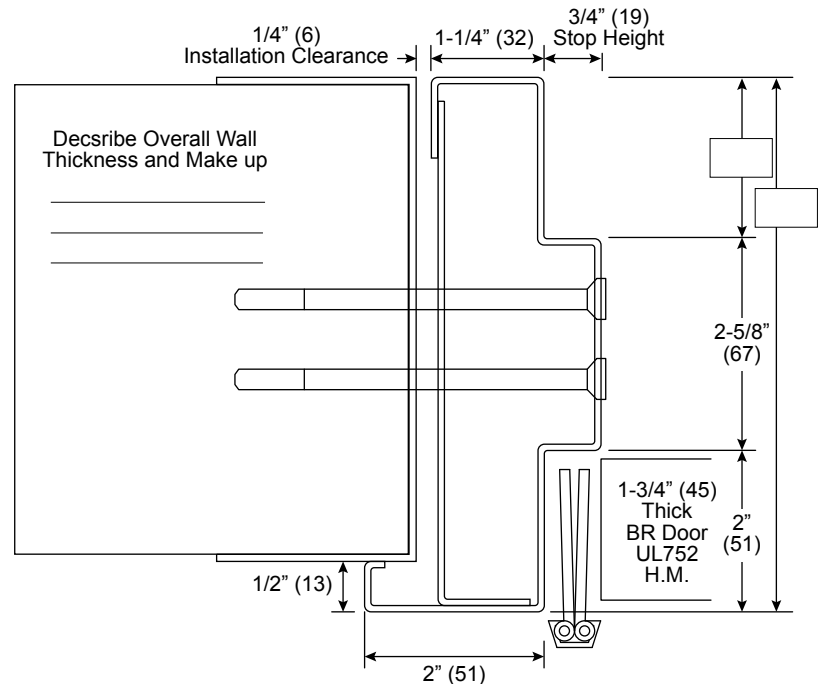


Custom Frame Detail C

State wall condition and overall size.

\_\_\_\_\_

\_\_\_\_\_

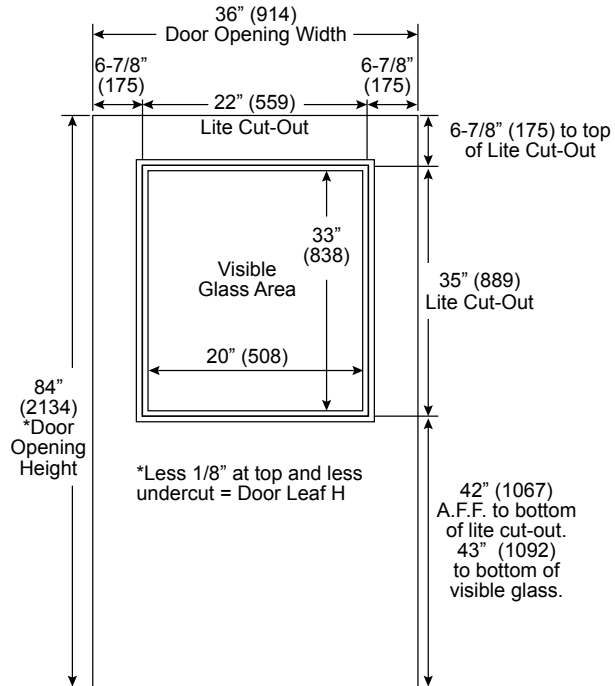


### STANDARD DIMENSIONS

- Visible Glass Area: 20" (508) W x 33" (838) H
- Visionlite Cut-Out Size: 22" (559) W x 35" (889) H
- Glazing Size: 21-1/2" (546) W x 34-1/2" (876) H

### GLAZING TYPE

- 1-3/16" (30) BR Glass Level 1 for BR Level 1 Door
- 1-11/16" (43) BR Glass Level 3 for BR Level 3 Door
- Other Specify \_\_\_\_\_



### CUSTOM DIMENSIONS

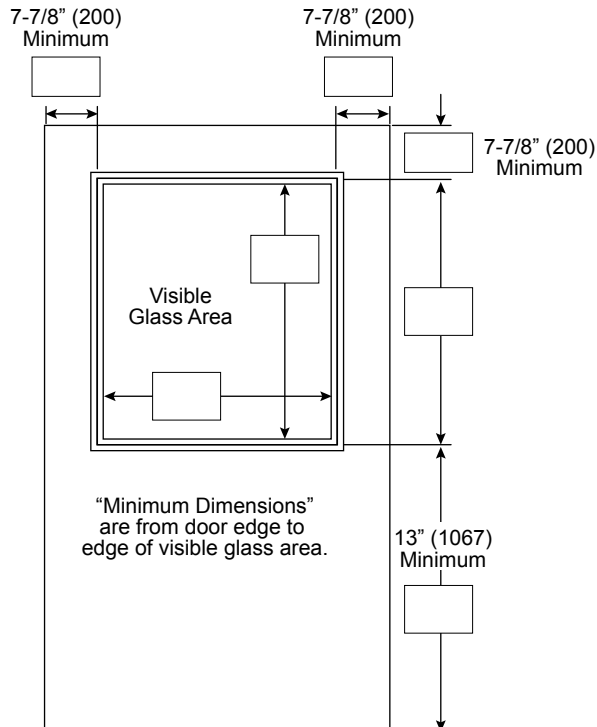
Visible Glass Area: WIDTH = \_\_\_\_\_ HEIGHT = \_\_\_\_\_

Visionlite Cut-Out Size: WIDTH + 2" = \_\_\_\_\_ HEIGHT + 2" = \_\_\_\_\_

Glazing Size: WIDTH + 1-1/2" = \_\_\_\_\_ HEIGHT + 1-1/2" = \_\_\_\_\_

### GLAZING TYPE

- 1-3/16" (30) BR Glass Level 1
- 1-11/16" (43) BR Glass Level 3
- 1-1/4" (32) BR Acrylic Level 1
- 1-1/4" (32) BR Lexgard Level 3
- Other Specify \_\_\_\_\_



APPROVED BY \_\_\_\_\_ DATE \_\_\_\_\_

## CRL BRDC Steel Bullet Resistant Door General Information

- Multi purpose UL752 tested and labeled, BR Level 1 thru 8 available. Door assembly for exterior and interior locations.
- BR Doors are designed for installation into finished wall opening.
- Wall Opening = Door Opening Width + 3" x Door Opening Height + 1-1/2"

### Door is:

- Made of GA16 prime quality cold rolled steel (ASTM A1008)
- 1-3/4" thick
- Door with vision lite glazing thicker than 1-3/4" has offset vision kit to accept wider than door glazing.
- Standard 5/8" undercut will accommodate a standard 1/2" high threshold at exterior installation. Threshold is not included with assembly.

### Frame is:

- Made of GA16 prime quality cold rolled steel (ASTM A1008)
- Factory welded, punched (P), and dimpled (D) for:
  - 1/4" FHSMS screws for stud wall construction. See Detail B on Page 2.
  - 3/8" FH sleeve anchors for masonry / concrete construction. See Detail A on Page 2.  
*Screws are staggered 18" on center. Head Strap & Pipe Spacer are at each screw location. Anchor screws are not supplied. Bottom P&D is on door side.*

### Frames and Doors are:

- Factory mortised for standard cylinder lock, and reinforced for continuous aluminum geared hinge and surface applied closer.
  - Cylinder Lock - Schlage D-Series ND50PD
  - Entrance / Office Lock Keyed Lock. Push-button locking. Push-Button locks outside lever until unlocked with key or by turning inside lever. Installation Instructions included with lock
  - Continuous Aluminum Concealed Hinge  
*Continuous aluminum Hinge is attached to door. It HAS NOT been predrilled for the attachment to the frame.*
  - Surface Applied Closer  
*The CRL PR90 Grade 1 Adjustable Spring Power Cast Iron Surface Mount Door Closer is recommended for high traffic public buildings like hospitals, airports and shopping centers to meet both A.D.A. accessibility requirements and provide the ultimate durability and maintenance free service. Closing and latching speed controls are independently adjustable and an adjustable back check feature helps prevent damage to the closer, door, and adjacent surface when the door is violently swung open due to wind or heavy pedestrian traffic.*
  - Prime Painted Finish  
*Baked on rust inhibitive oxide primer has been applied over door and frame components, which have been thoroughly cleaned with a phosphatizing process. Intended for wet paint final finish.*

### Installer is Responsible for:

- Removing the spreader on the frame before the installation  
*Spreader is spot welded for transportation and handling purposes only.*
- Installation of the frame into the wall, and providing the necessary anchoring screws
- Mounting frame leaf of continuous hinge to frame (install the door onto the frame).  
*Hinge has been predrilled for #12 screws. Installer has to transfer and drill holes in the frame, using #13 or 3/16" drill, and attach hinge using supplied self-tapping #12-24 x 1/2" FHP screws*
- Installation of both door lock and door closer
- Installing frame square, plumb, and in plane to achieve proper alignment and seal contact

### Custom Options

- Custom frame profile to match your wall.
- Special size door and/or vision lite kit
- Preparation for custom hardware by others (closer, lock, exit device, electrified strike ...)  
*Only preparation for specified hardware will be provided by CRL. Hardware itself is Customer's responsibility.*
- Frames and doors fabricated from galvanized steel or stainless steel
- Door faces with applied wood veneer or plastic laminate (variety of color selections)